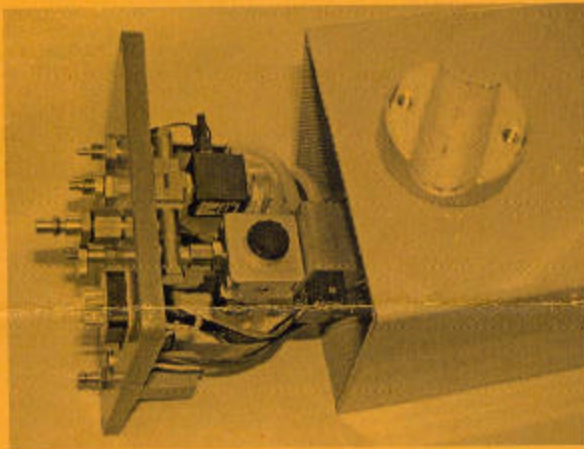


# Retrofit solution when the EasyTronic input unit buzzes

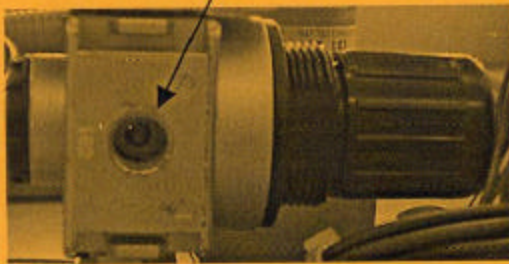
Parts required



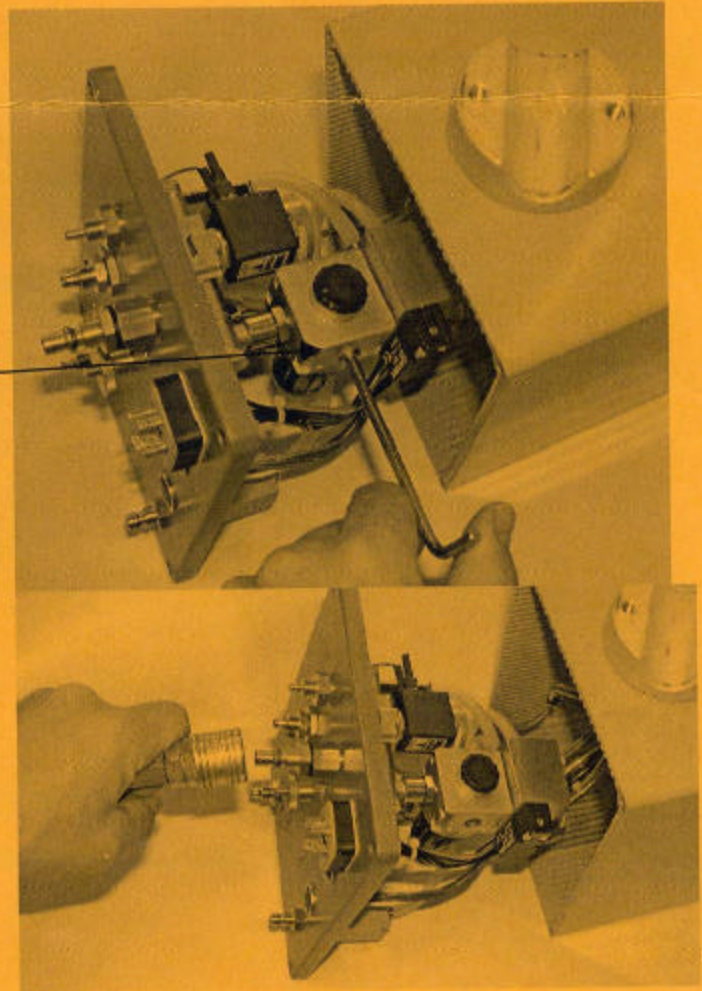
1. Remove the rear panel



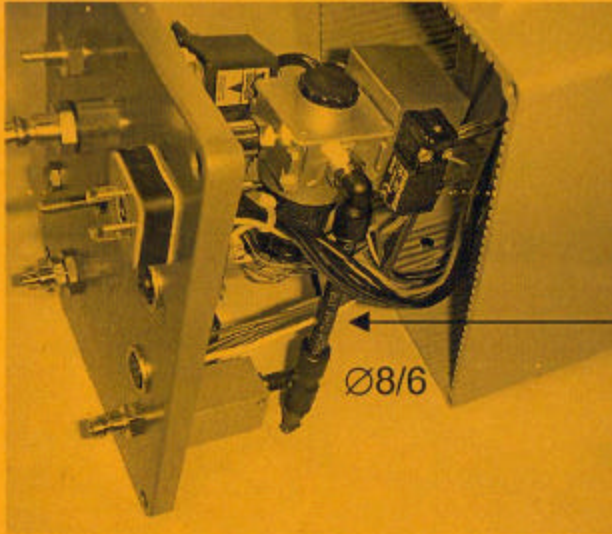
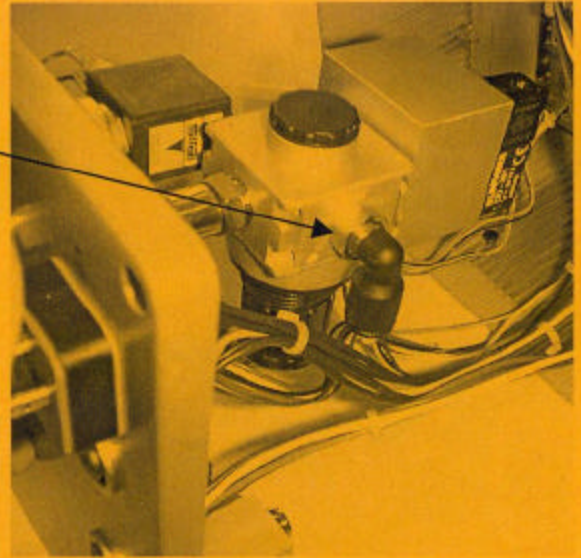
2. Unscrew the plug on the pressure valve



3. The pressure valve is cleaned when the main air line is connected to the pressure gauge connection for a short time



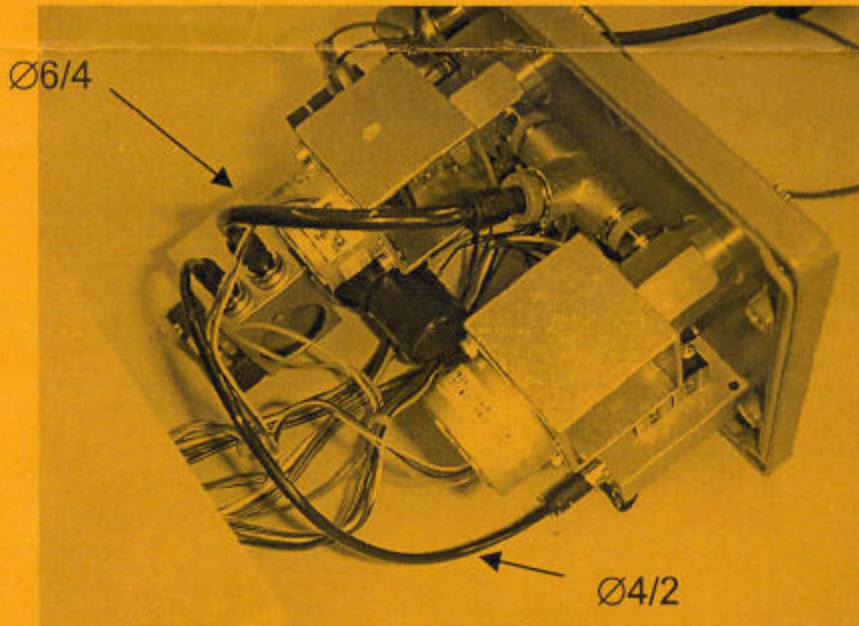
4.Screw in the elbow joint



5.Connect the hose and plug piece



6.Fit the reduction valves and connection hoses.



7.Refit the rear panel and connections